

# To Those Receiving the COVID-19 Vaccine






~ take care of your health afterwards ~  
(especially immediately after to a few days later)

After receiving the vaccine, **please sit within the vaccination venue for 15 minutes** to see how you feel. (If you have a history of severe allergic reactions (including anaphylactic shock), or feel faint/unwell when having blood drawn, **please wait 30 minutes**)

## Symptoms that may occur (over 10% of those vaccinated)

As this is an intramuscular injection, minor side effects such as pain and fatigue may occur but these **normally subside in a few days**. Take painkillers if needed and observe your condition. (It is rare for symptoms to be severe enough to affect your daily life)

【Type, timing and duration of symptoms】

Symptom									
	Pain	Swelling	Diarrhea	Muscle pain	Joint pain	Headache	Fatigue	Chills	Fever
Likelihood	84.3%	10.6%	15.5%	37.9%	23.7%	55.1%	62.9%	32.4%	14.8%
Timing	On the day		The next day						
Duration	<b>About 2 days</b>		<b>About 1 day</b>						

【Likelihood of severe symptoms】

Symptom	Pain	Swelling	Diarrhea	Muscle pain	Joint pain	Headache	Fatigue	Chills	Fever
Likelihood	<b>1.5%</b>	<b>0.4%</b>	<b>0.3%</b>	<b>1.8%</b>	<b>0.9%</b>	<b>2.4%</b>	<b>4.2%</b>	<b>1.8%</b>	-

Source: Study C4591001 and Study C4591005

This vaccine requires 2 doses. It has been found that these **symptoms are more likely to occur after the second dose**. **Younger ages are also more likely than the elderly** to have symptoms. Side effects occur as a result of an immunoreaction and are a sign that your immune system is active.

If the above symptoms continue or if you notice an abnormal change to your health, **please consult the venue where you received your vaccination, your general practitioner or the Osaka Prefectural COVID-19 Vaccination Consultation Center**.

Please see a doctor if you experience severe pain or fatigue, high fever or other serious symptoms.

## Serious symptoms that might occur (likelihood unknown)

### 【Symptoms and timing】

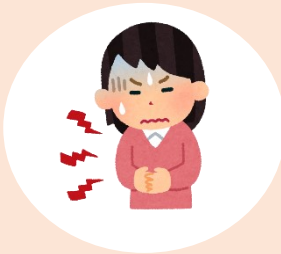
■ If the following symptoms occur **straight after receiving the vaccine, or between 5-30 minutes after**, there is a possibility you have anaphylactic shock.

Frequency of Anaphylaxis: 11.1 cases per 1 million doses

Source: Study C4591001 and Study C4591005



- Itchiness
- Hives
- Red spots
- Reddening of skin



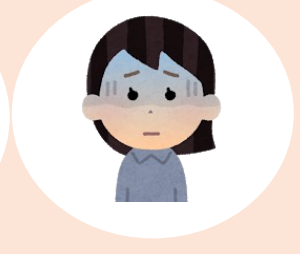
- Stomach pain, nausea



- Abnormality with eyesight



- Hoarse voice
- Sneezing
- Itchiness in throat
- Difficulty breathing



- Paleness
- Clouding of consciousness'

Wait at the venue after receiving your vaccination and if any of these symptoms occur, immediately tell a doctor or nurse.

■ If these symptoms occur after you leave the vaccination venue, please contact the Osaka Prefectural COVID-19 Vaccination Consultation Center. They are open 24 hours a day.

### For severe symptoms

## Osaka Prefectural COVID-19 Vaccination Consultation Center

 0570-012-336/06-6635-2047

24 hours

Open on weekends & public holidays

※Japanese only



Scan the QR code for details and updates

## Compensation for health damages due to the vaccination (予防接種健康被害救済制度)

■ In the case your health is affected as a result of the COVID-19 vaccine, you are eligible to receive aid (medical costs, disability pension etc.) under the Vaccination Law. Please contact the city/town/village where you are registered as a resident for details on the application process. Payments will be made by your city/town/village once examined and approved.